

BUG Stopper

Keeping bugs out



Head office 1-2-29, Nankokita, Suminoe-ku, Osaka,
559-0034 Japan
Tel: 81-6-6612-7700 Fax: 81-6-6612-7701
Tokyo Office Kayabacho Ekimae Bldg. 7F, 2-11-8, Nihonbashi-Kayabacho, Chuo-ku, Tokyo
103-0025 Japan
Tel: 81-3-3662-8858 Fax: 81-3-3662-8860
<http://www.aqcnet.com>

Contact

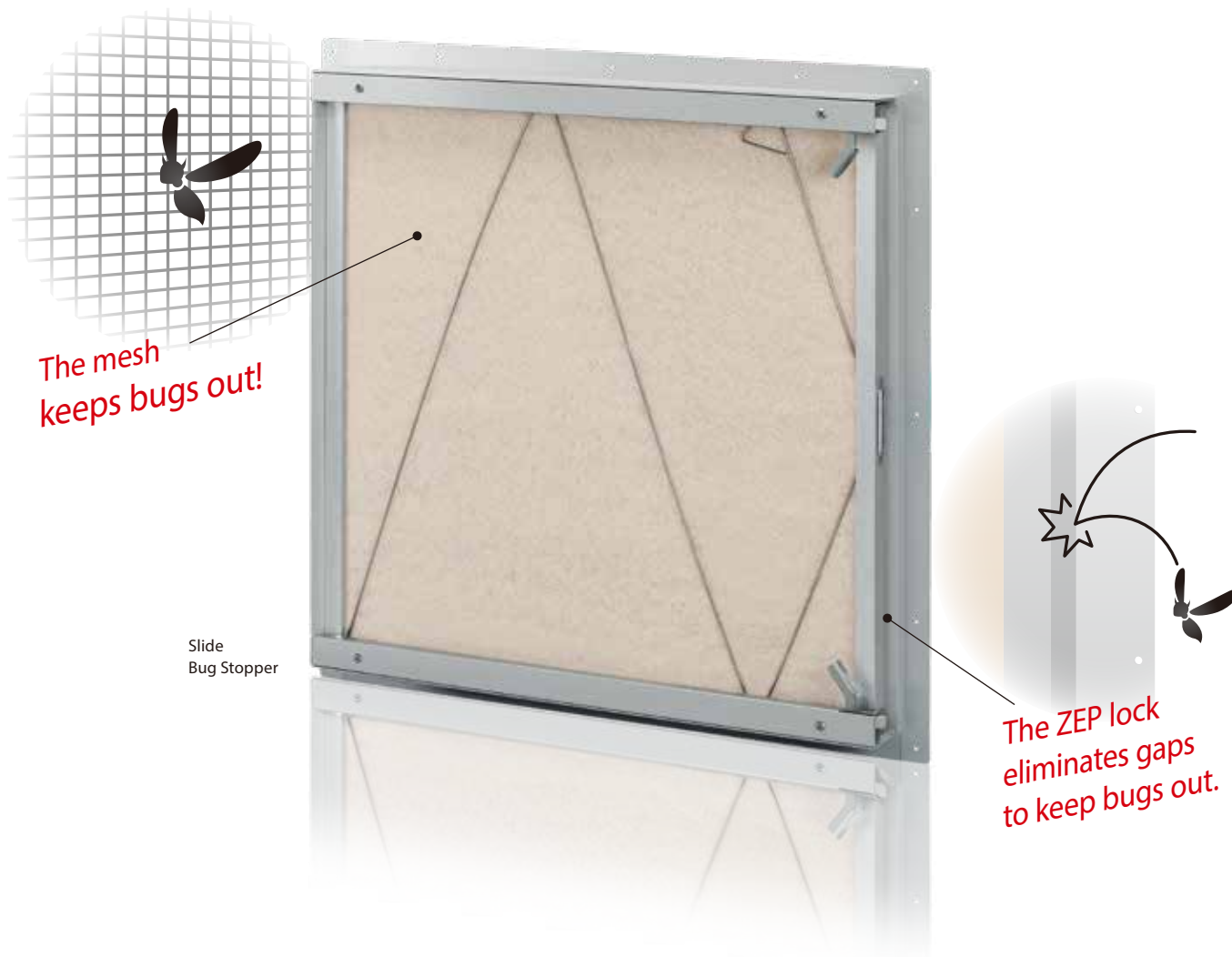
Specifications for all products herein are subject to change without notice. ZEGC18-06 (15-03)



BUG Stopper



The ZEG lock eliminates gaps between the mounting frame or casing and the filter, while the mesh sealed filter completely seals the filter frame and mesh. These two features give the Bug Stopper significant bug control effects.



The two features work together to keep bugs out.

ZEG lock

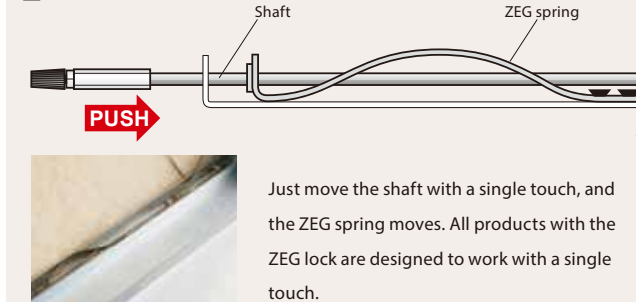
Japanese No.5855301



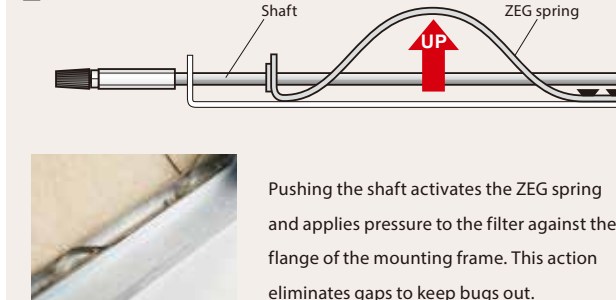
Quick lock mechanism

A single touch eliminates gaps between the mounting frame and filter.

ZEG lock activation



ZEG lock in use



Quick replacement

No need to tighten screws; reduces time required for replacement.

Conventional product



ZEG lock

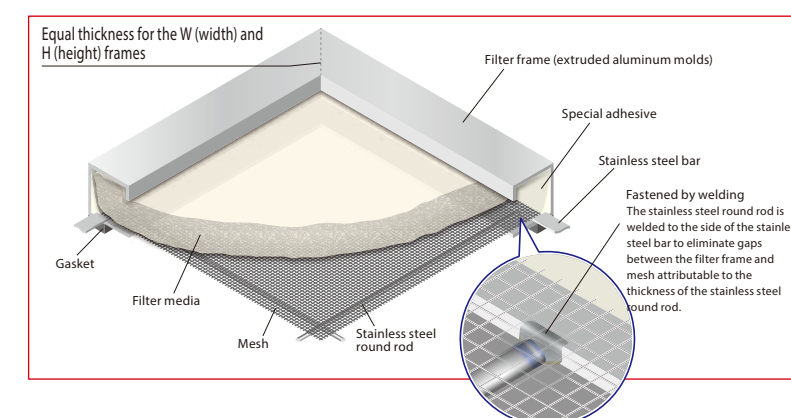


The lock activates with a single touch. No troublesome procedures, like tightening screws, required for replacement, saving time and enhancing efficiency.

Mesh sealed filter

Bug blocking configuration

Eliminates small gaps between mesh and filter frame to keep bugs out.

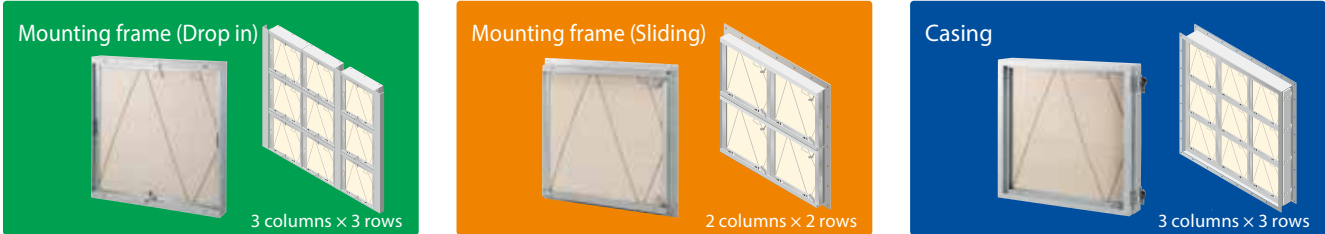


Features of Mesh sealed filter

- 1 The filter frame and mesh are sealed together with special adhesive around their edges to keep bugs from entering downstream.
- 2 Stainless steel mesh enhances durability and ease of maintenance, reducing operating costs
- 3 The frame thickness is only available in 25mm, but width and height can be customized to various sizes and for multiple-filter assembly.

The Bug Stopper is compatible with various types of air conditioning systems.

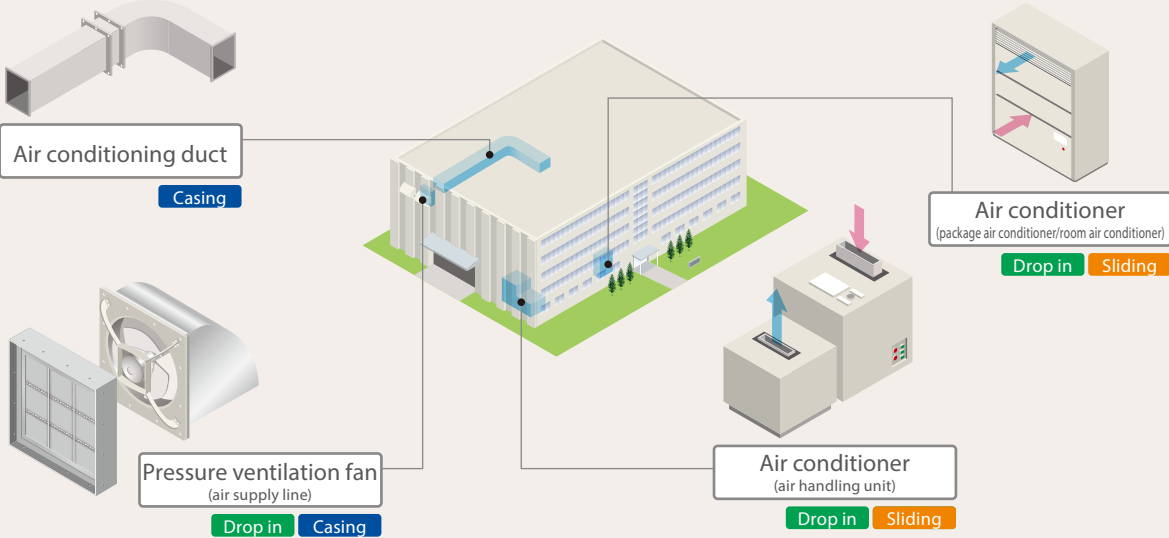
Types of products Three types of Bug Stopper products are available. Select the best one to meet needs in various locations.



Places/Facilities for use The Bug Stopper is used at various locations in the following facilities:

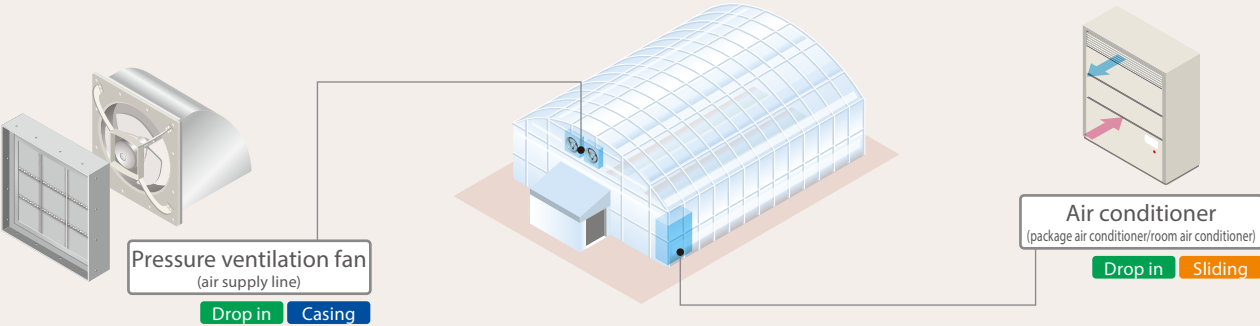
<Food, chemical, and biotechnology factories>

Keeps bugs away from products manufactured at the factories.



<Greenhouses and vegetable factories>

Prevents crop damage due to bugs.



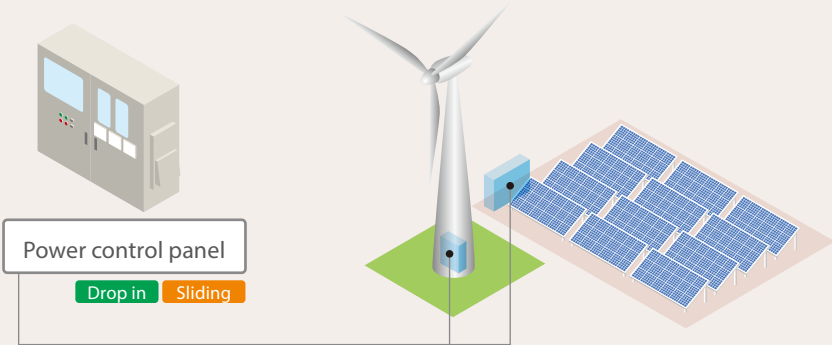
<Restaurants>

Ensures food safety.



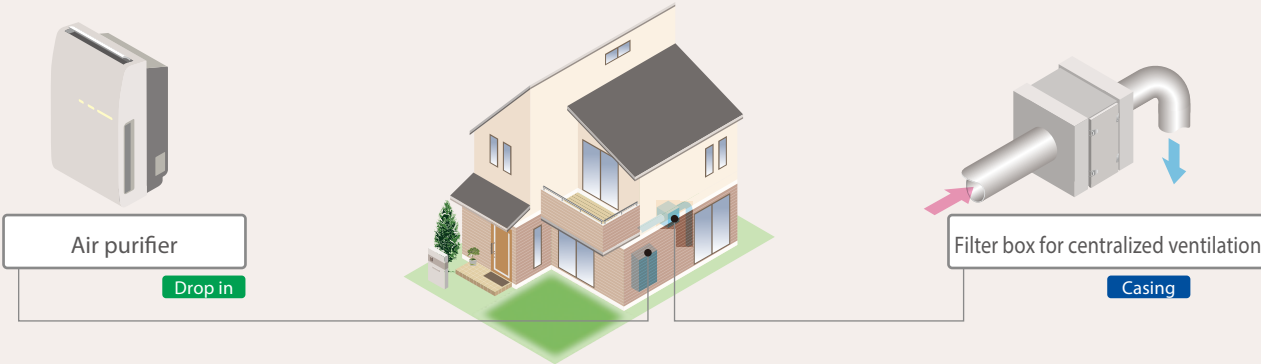
<Wind and solar power plants>

Prevents salt damage to electronic devices and other sensitive equipment incorporating state-of-the-art technologies.



<Homes>

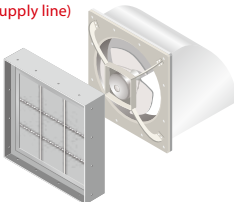
Also used for household air conditioning systems.



Application examples

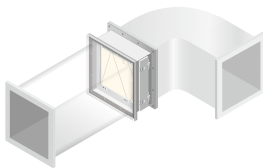
These are examples of Bug Stopper installations in various facilities.

Pressure ventilation fan (air supply line)



The filter is installed on the inside of the ventilation fan to keep bugs out.

Air conditioning duct



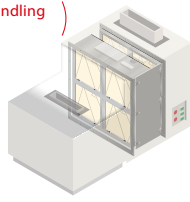
The casing is installed between the ducts to keep bugs out.

Air conditioner (package air conditioner/room air conditioner)



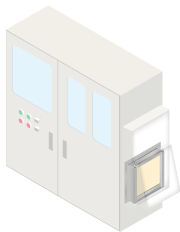
The filter is installed in a mounting frame adjusted to the structure to keep bugs out and enhance air conditioning performance.

Air conditioner (air handling unit)



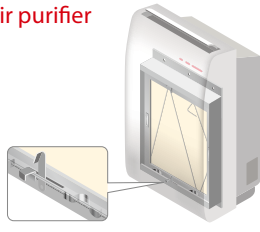
The Bug Stopper can be installed for large-scale systems incorporating multiple filters.

Power control panel



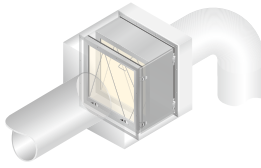
A filter that prevents salt damage prevention is available with the ZEG lock.

Air purifier



The household filter can be fitted with the ZEG lock to enhance efficiency.

Filter box for centralized ventilation



Simply shut the door to activate the ZEG lock and keep bugs out.

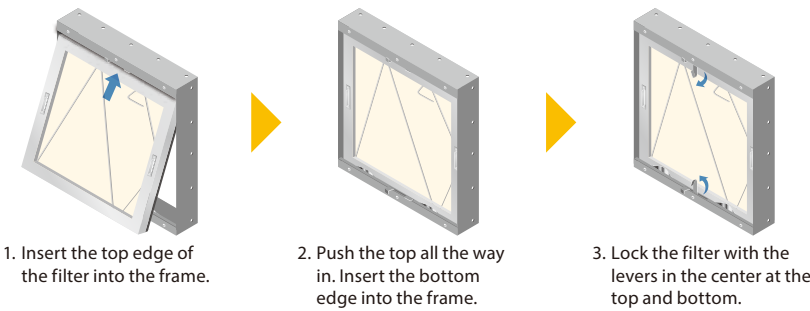
Bug Stopper product list

The Bug Stopper is available with mounting frames (drop in and sliding) and casings for various applications. The Bug Stopper can be customized for various sizes and multiple-filter configurations, air flow direction, and servicing side.

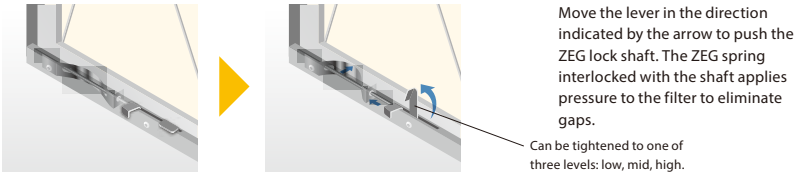
Drop in Bug Stopper

Mounting frame (drop in) + Mesh sealed filter

[Filter attachment procedure]



[Mechanism of ZEG lock]

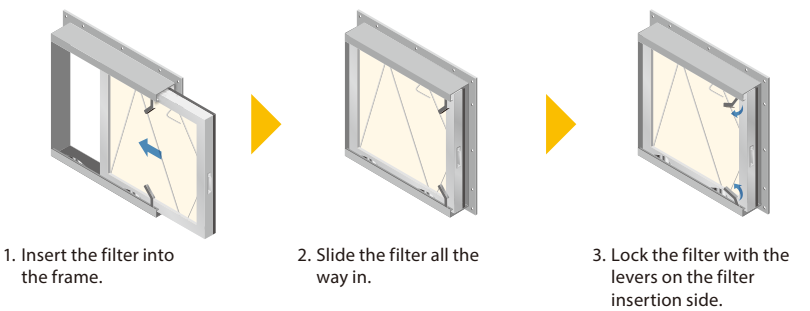


- [Features]
- The filter is locked by a simple lever operation.
 - The tightening strength of the filter can be adjusted to one of three levels.
 - The maximum number of filters in a set is four columns by three rows.
 - The filter can be customized to be serviced on the outflow side.

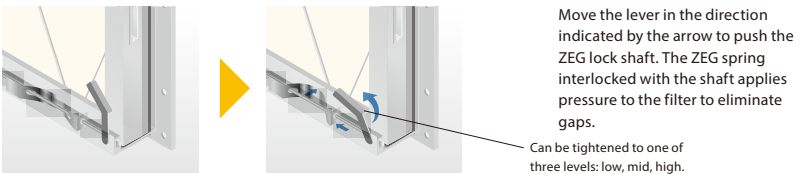
Sliding Bug Stopper

Mounting frame (sliding) + Mesh sealed filter

[Filter attachment procedure]



[Mechanism of ZEG lock]

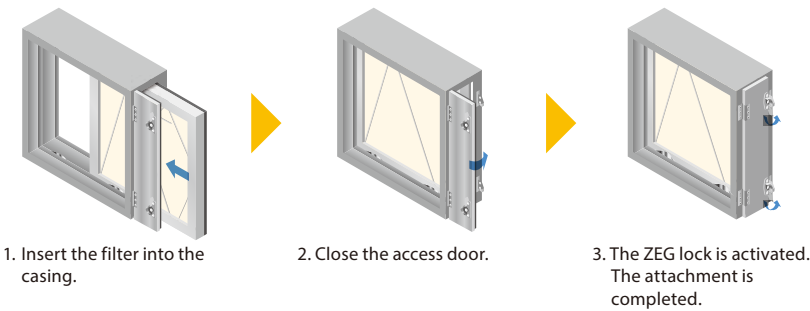


- [Features]
- The filter is locked by a simple lever operation.
 - The tightening strength of the filter can be adjusted to one of three levels.
 - The maximum number of filters in a set is two columns by three rows.

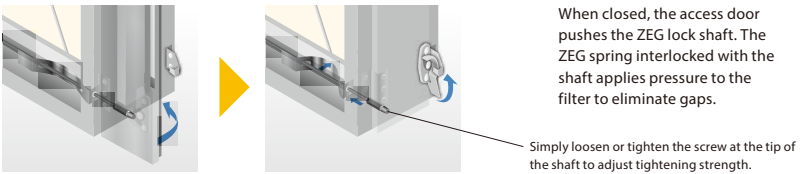
Casing Bug Stopper

Casing + Mesh sealed filter

[Filter attachment procedure]



[Mechanism of ZEG lock]



- [Features]
- To lock the filter, simply close the access door.
 - Adjust the tightening pressure of the filter with the adjustment screw.
 - The maximum number of filters in a set is three columns by three rows.
 - The filter can be customized for vertical air flow direction.

Mesh sealed filter (MSMF filter)



Used in combination with a casing or mounting frame equipped with ZEG lock, the Mesh sealed filter makes a significant difference in keeping out bugs. The filters can be customized to fit various casings and mounting frames.

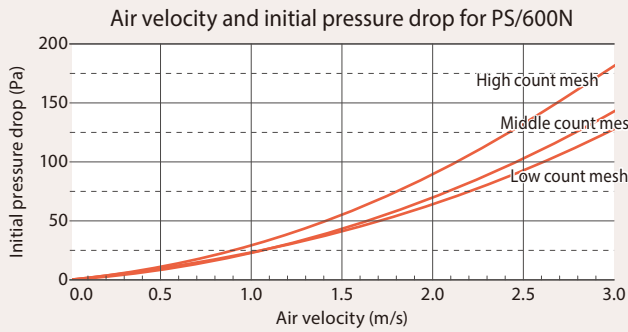
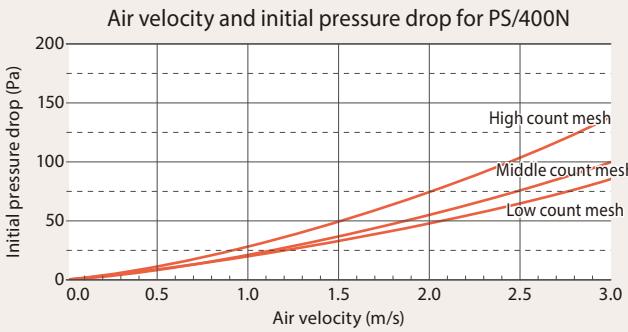
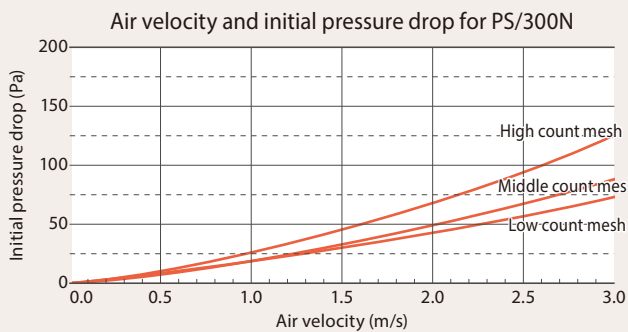
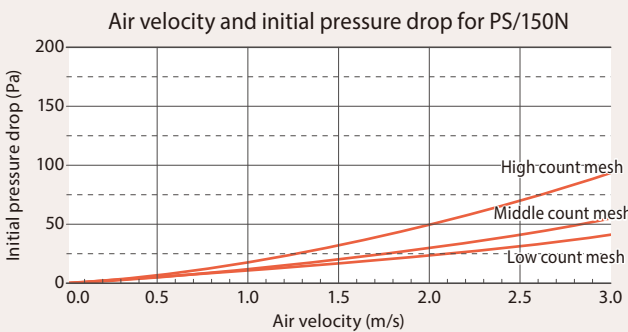
Stainless steel mesh available for three different bug control levels

| Bug control level | Target bugs | Bug size | Mesh type | | |
|-------------------|---------------------------------------|------------------|----------------|-------------------|-----------------|
| | | | Low count mesh | Middle count mesh | High count mesh |
| 1 | Moths and other relatively large bugs | 3 mm or larger | ○ | ○ | ○ |
| 2 | Drosophila and similar bugs | 1 mm or larger | × | ○ | ○ |
| 3 | Thrips and other small bugs | 0.2 mm or larger | × | × | ○ |

Mesh sealed filter performance table

Select filter media from the table below in accordance with the service environment.

| Frame thickness (mm) | Mesh | Filter media product no. | Air velocity (m/sec) | Arrestance (%) (gravimetric method) | Initial pressure drop (Pa) |
|----------------------|-------------------|--------------------------|----------------------|-------------------------------------|----------------------------|
| 25 | High count mesh | PS/150N | 2.5 | 63 | 70 |
| | | PS/300N | | 73 | 94 |
| | | PS/400N | | 76 | 104 |
| | | PS/600N | | 82 | 134 |
| 25 | Middle count mesh | PS/150N | 2.5 | 63 | 41 |
| | | PS/300N | | 73 | 65 |
| | | PS/400N | | 76 | 75 |
| | | PS/600N | | 82 | 105 |
| 25 | Low count mesh | PS/150N | 2.5 | 63 | 32 |
| | | PS/300N | | 73 | 56 |
| | | PS/400N | | 76 | 66 |
| | | PS/600N | | 82 | 96 |



○ While the ZEG lock and Mesh sealed filter will enhance bug control significantly, no guarantee is made that they will keep all bugs out.